



# THEWINGS

by AL MIZAN

Floor & Unit Plans



# Celebrating Everyday Life

**DISCLAIMER**

While we endeavour to keep the information up to date and correct, the artistic representation, images and visualisation contained in this brochure is provided for illustrative and marketing purposes. While the information provided is believed to be accurate and reliable at the time of printing, only the contained information in the final sales and purchase agreement will have any legal effect.





THE WINGS

# Feel the Pulse of a Vibrant Address

Nestled in the strategic location of Arjan, The Wings is Al Mizan's flagship project with three residential buildings, a retail boulevard, and unparalleled amenities.





THE WINGS



# Architecture That Nurtures Creativity

Al Mizan being a boutique developer has introduced their high standards to the project, including meticulous commitment to detail and craftsmanship, resulting in state-of-the-art buildings that are destined to become convivial homes.



## AMENITIES

*The Sky Club, Sky Lounge and Sky Gym promotes a sense of community at The Wings development.*

Fans of cardio workouts can get their heart rate going at the fully equipped indoor gyms. Residents can unwind, relax and indulge in numerous activities with loved ones and friends at the Sky Lounge, Sky Club and Sky Deck. With comfortable couches, pool tables, foosball tables and more, residents and guests can enjoy a remarkable escape.



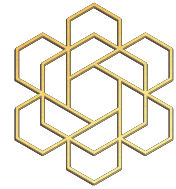


## RESIDENCES

*Where every detail is built for a purpose, and designed with great connotation.*

- Italian Toscana kitchens
- Villeroy & Boch sanitary ware
- Toscana wardrobes
- Electrolux Appliances
- Spanish custom designed lights
- Glass backsplash on Kitchen Wall
- Quartz Countertops





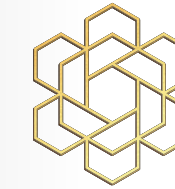
### BLOCK A

## Typical Studio Apartment

SIZE RANGE: 445 - 534 SQ. FT. | 41.34 - 49.61 SQ. M.



Disclaimer: All pictures, layouts, information, data and details included in the brochure are indicative only and may change at any time up to the final 'as built' status in accordance with the final designs of the project, regulatory approvals and planning premissions.



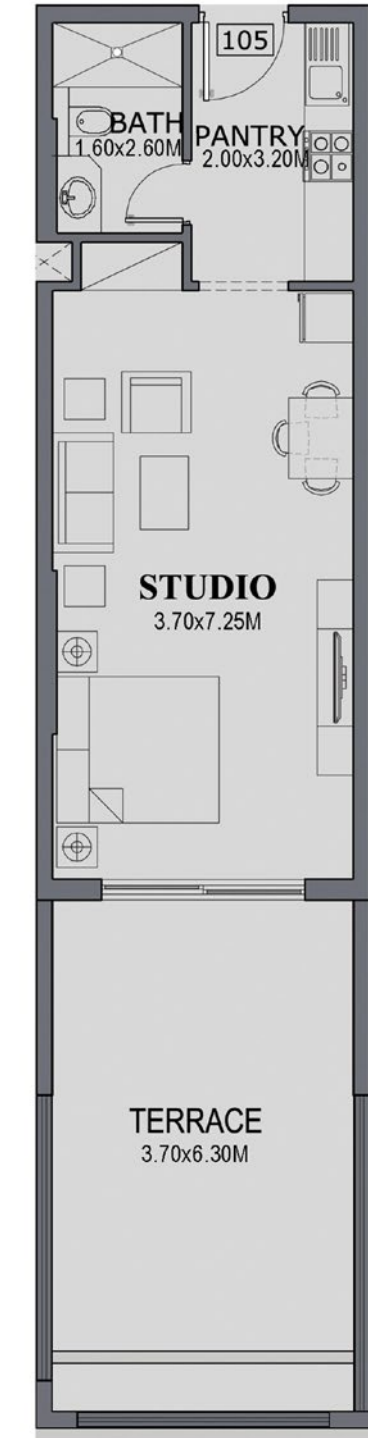
### BLOCK A

## Terrace Studio Apartment

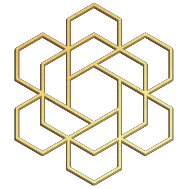
SIZE RANGE: 625 - 1035 SQ. FT. | 58.06 - 96.15 SQ. M.



Disclaimer: All pictures, layouts, information, data and details included in the brochure are indicative only and may change at any time up to the final 'as built' status in accordance with the final designs of the project, regulatory approvals and planning premissions.



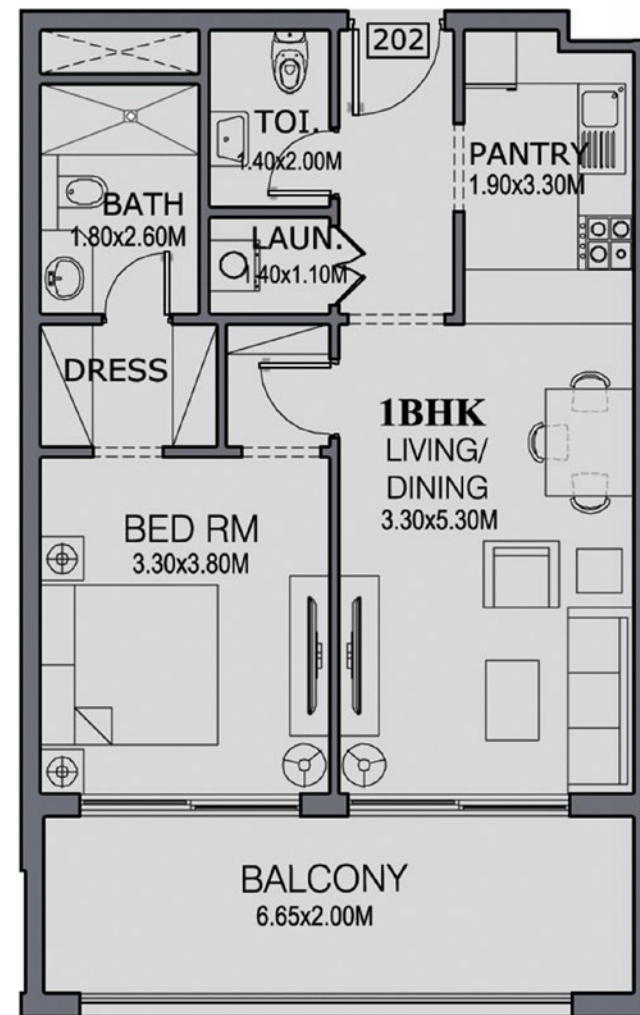
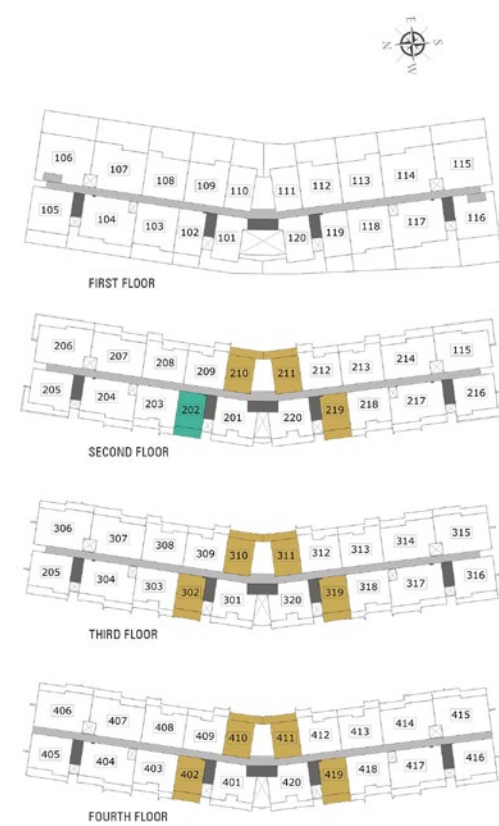




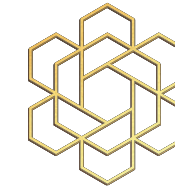
### BLOCK B

## Typical 1-Bedroom Apartment

SIZE RANGE: 801 - 815 SQ. FT. | 74.41 - 75.72 SQ. M.



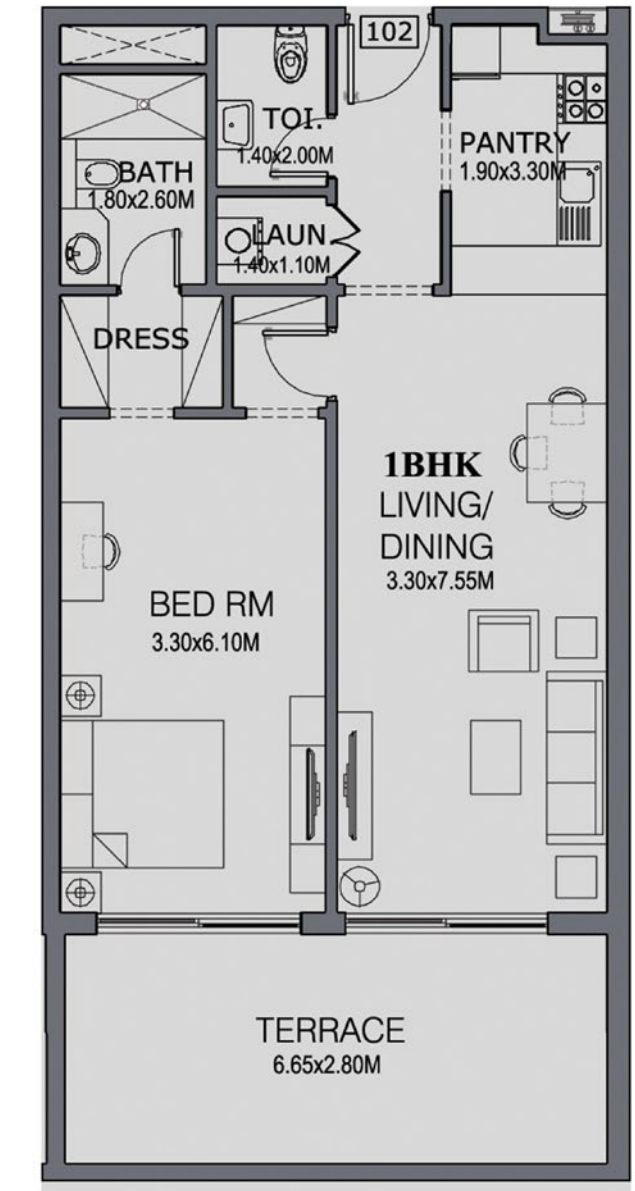
Disclaimer: All pictures, layouts, information, data and details included in the brochure are indicative only and may change at any time up to the final 'as built' status in accordance with the final designs of the project, regulatory approvals and planning permissions.



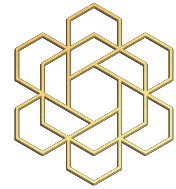
### BLOCK B

## Terrace 1-Bedroom Apartment

SIZE RANGE: 1033 - 1485 SQ. FT. | 95.97 - 137.96 SQ. M.



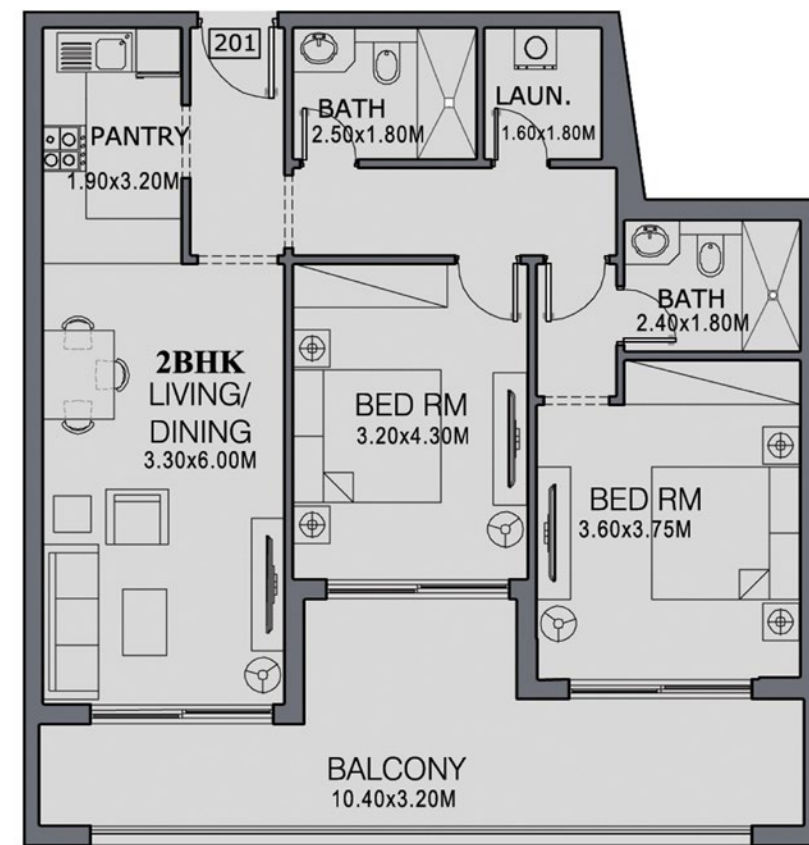
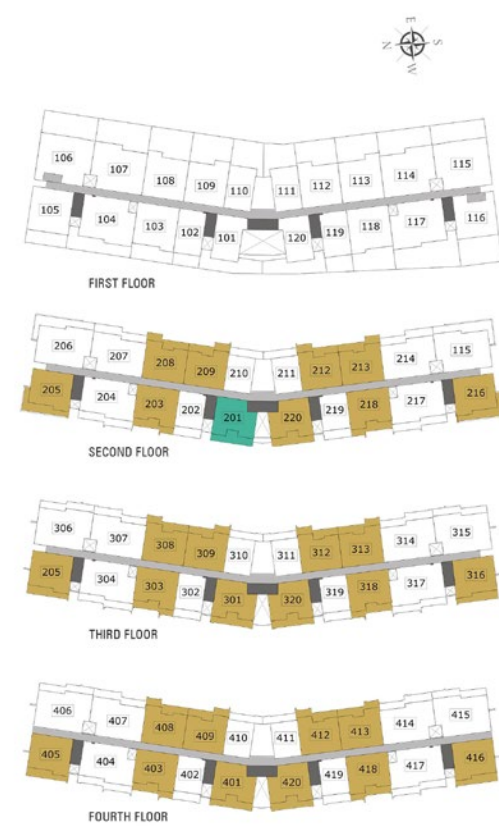
Disclaimer: All pictures, layouts, information, data and details included in the brochure are indicative only and may change at any time up to the final 'as built' status in accordance with the final designs of the project, regulatory approvals and planning permissions.



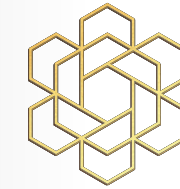
### BLOCK B

## Typical 2-Bedroom Apartment

SIZE RANGE: 1163 - 1265 SQ. FT. | 108.05 - 117.52 SQ. M.



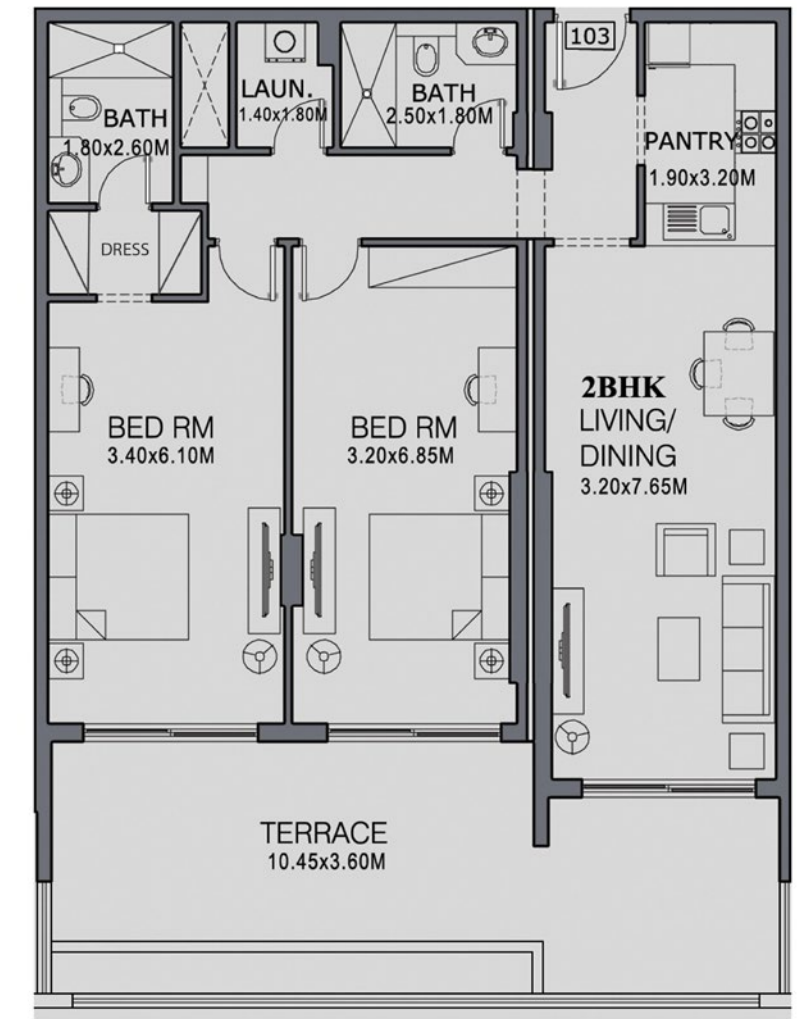
Disclaimer: All pictures, layouts, information, data and details included in the brochure are indicative only and may change at any time up to the final 'as built' status in accordance with the final designs of the project, regulatory approvals and planning premissions.



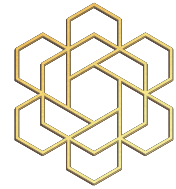
### BLOCK B

## Terrace 2-Bedroom Apartment

SIZE RANGE: 1464 - 2002 SQ. FT. | 136.01 - 185.99 SQ. M.



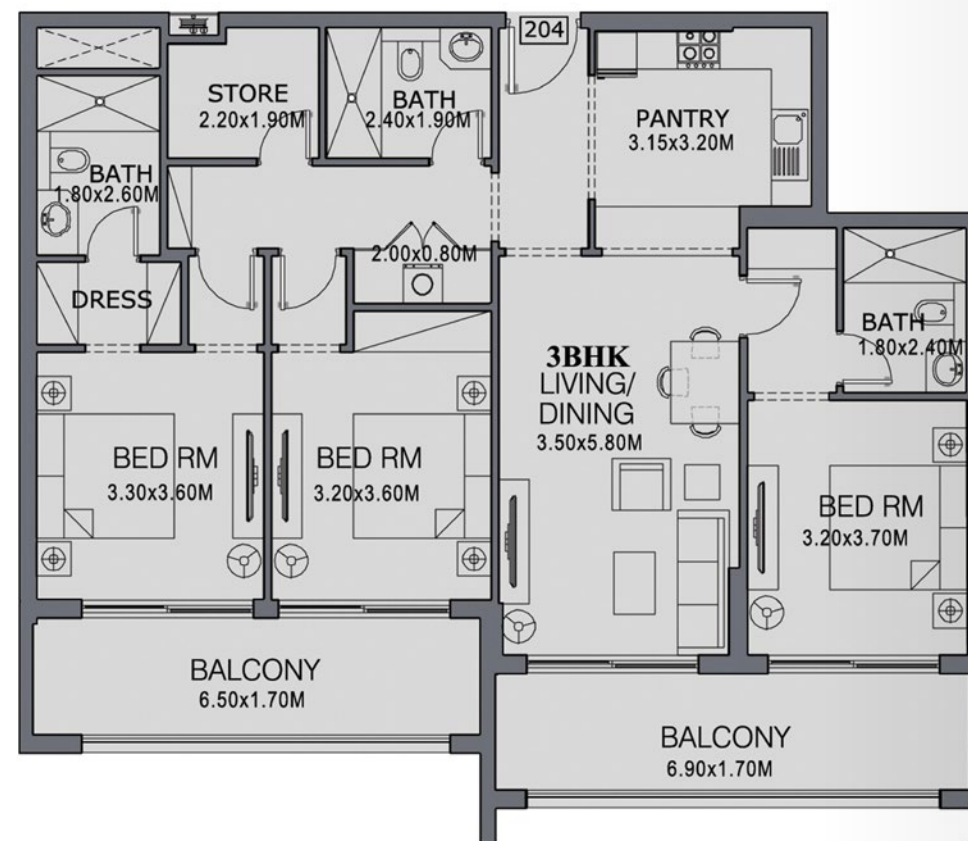
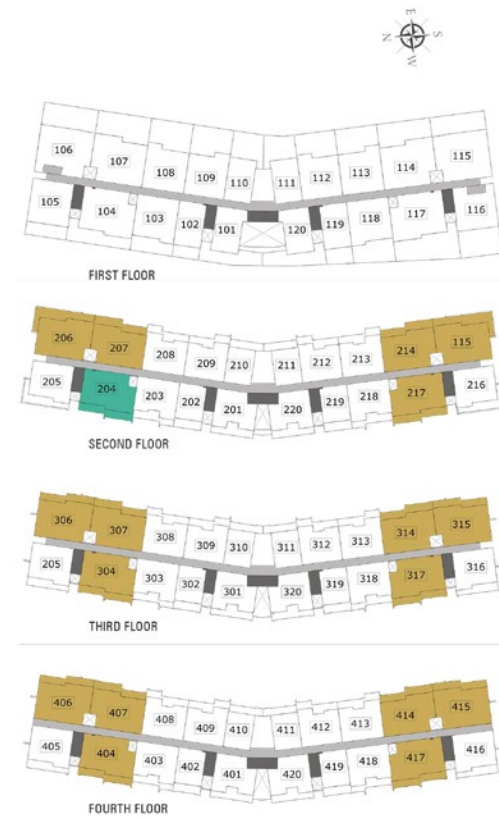
Disclaimer: All pictures, layouts, information, data and details included in the brochure are indicative only and may change at any time up to the final 'as built' status in accordance with the final designs of the project, regulatory approvals and planning premissions.



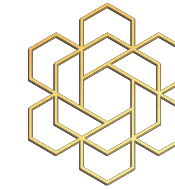
### BLOCK B

## Typical 3-Bedroom Apartment

SIZE RANGE: 1510 - 1752 SQ. FT. | 140.28 - 162.76 SQ. M.



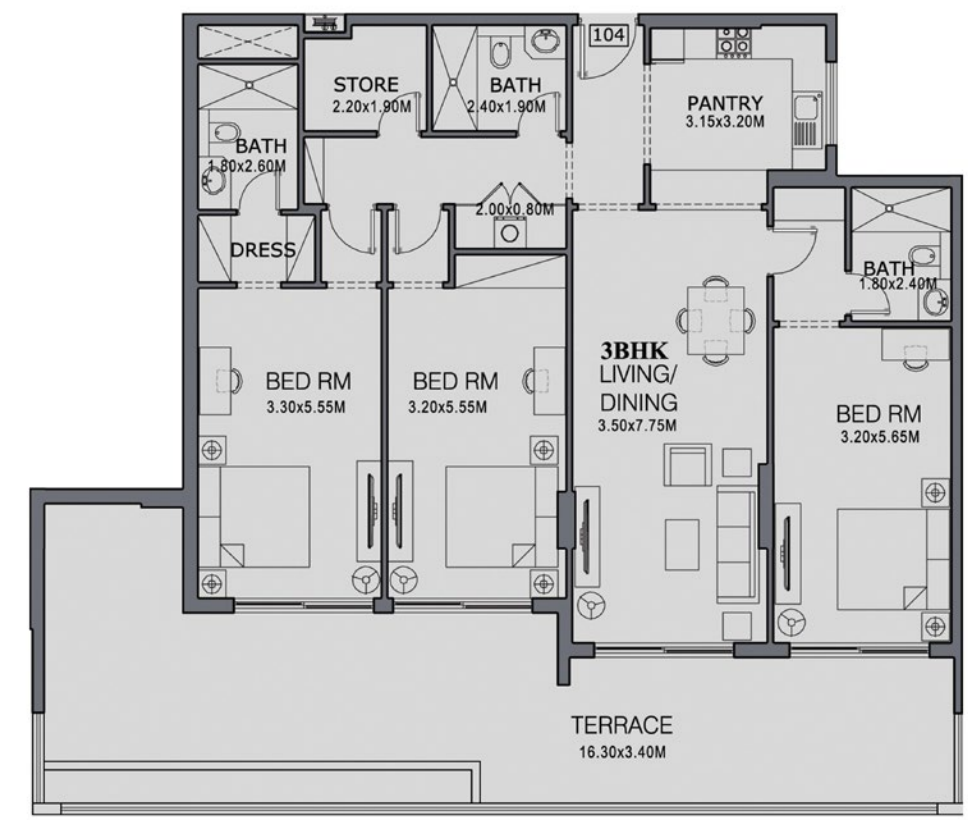
Disclaimer: All pictures, layouts, information, data and details included in the brochure are indicative only and may change at any time up to the final 'as built' status in accordance with the final designs of the project, regulatory approvals and planning premissions.



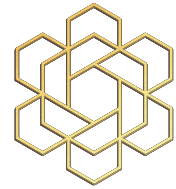
### BLOCK B

## Terrace 3-Bedroom Apartment

SIZE RANGE: 2163 - 2666 SQ. FT. | 200.95 - 247.68 SQ. M.



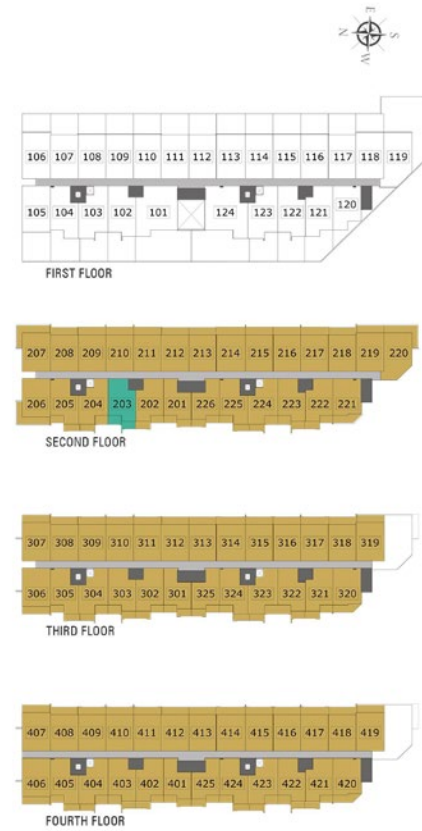
Disclaimer: All pictures, layouts, information, data and details included in the brochure are indicative only and may change at any time up to the final 'as built' status in accordance with the final designs of the project, regulatory approvals and planning premissions.



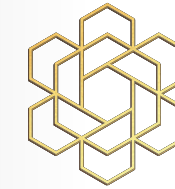
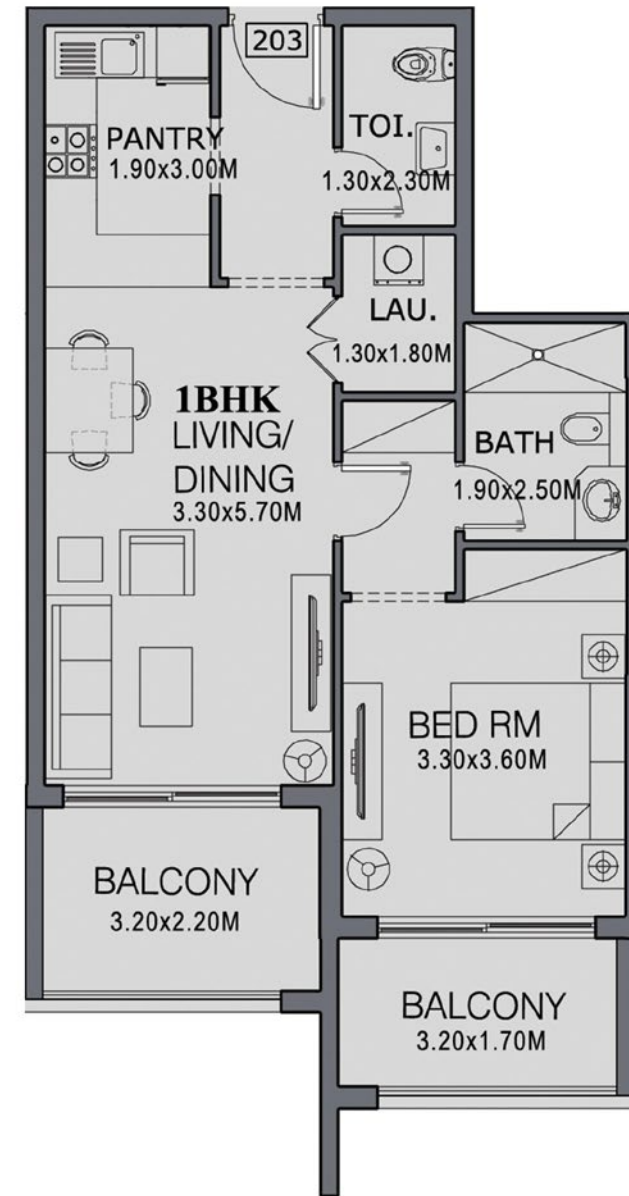
### BLOCK C

## Typical 1-Bedroom Apartment

SIZE RANGE: 713 - 1007 SQ. FT. | 66.24 - 93.55 SQ. M.



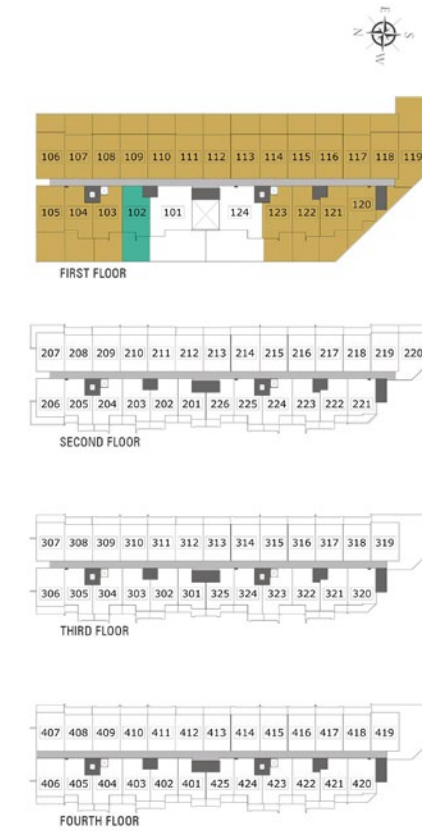
Disclaimer: All pictures, layouts, information, data and details included in the brochure are indicative only and may change at any time up to the final 'as built' status in accordance with the final designs of the project, regulatory approvals and planning premissions.



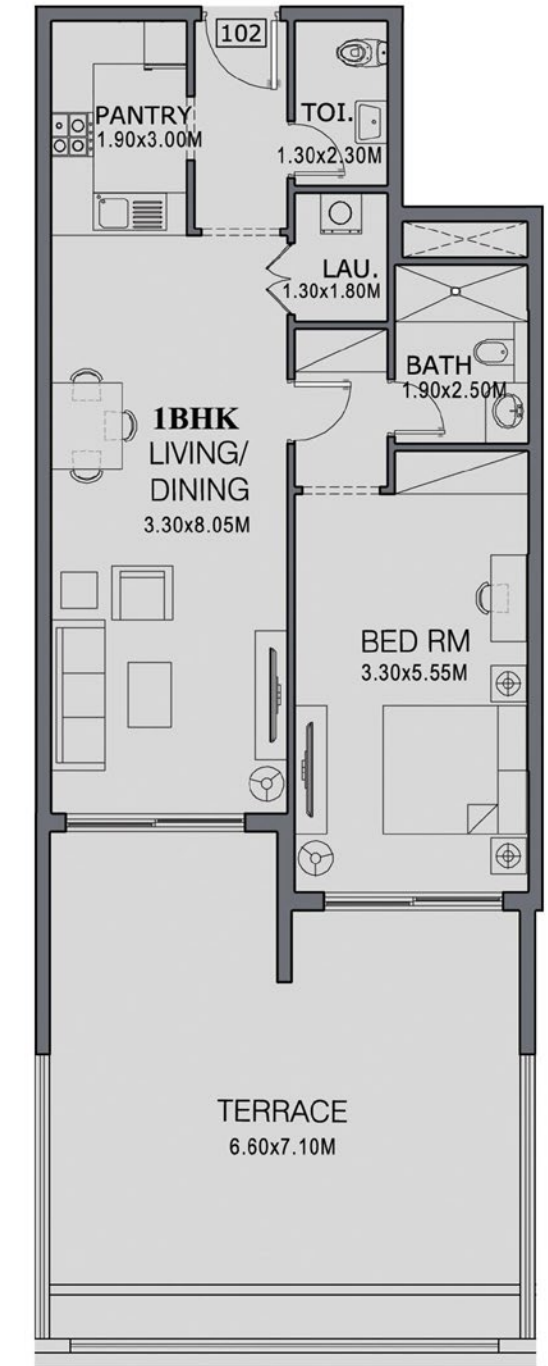
### BLOCK C

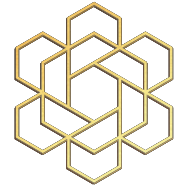
## Terrace 1-Bedroom Apartment

SIZE RANGE: 889 - 2376 SQ. FT. | 82.59 - 220.74 SQ. M.



Disclaimer: All pictures, layouts, information, data and details included in the brochure are indicative only and may change at any time up to the final 'as built' status in accordance with the final designs of the project, regulatory approvals and planning premissions.

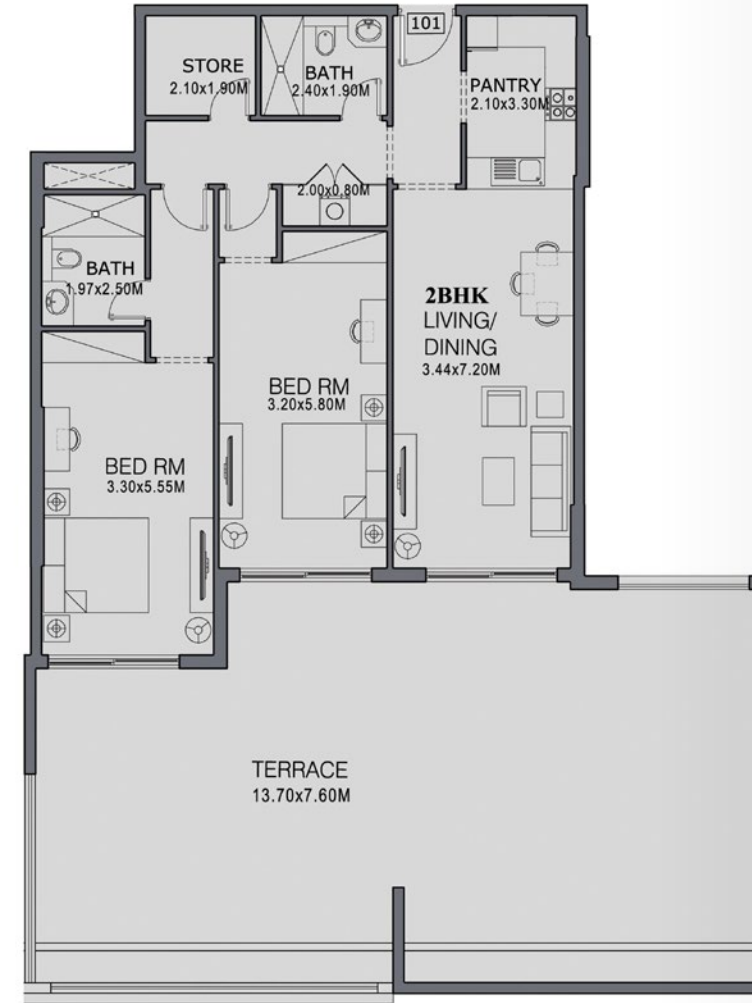
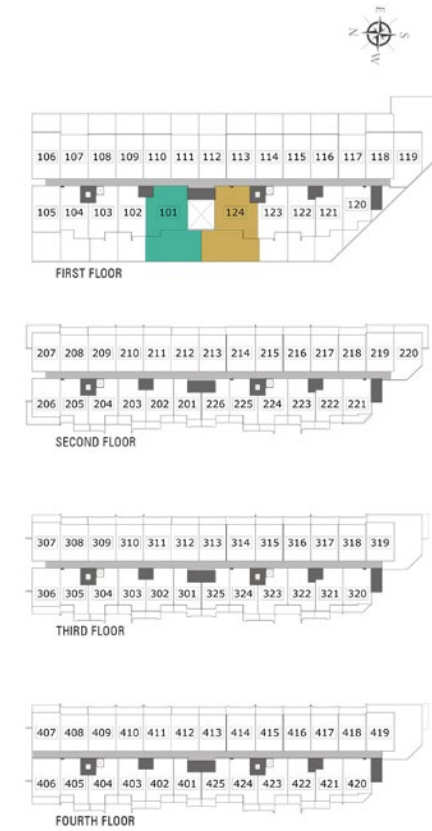




BLOCK C

Terrace 2-Bedroom Apartment

SIZE RANGE: 2285 - 2326 SQ. FT. | 212.28 - 216.09 SQ. M.



PROJECT DEVELOPER



AL MIZAN

GROUP SINCE 1998

CONSULTANT



CONTRACTOR



GCC CONTRACTING  
جي سي سي للمقاولات

Disclaimer: All pictures, layouts, information, data and details included in the brochure are indicative only and may change at any time up to the final 'as built' status in accordance with the final designs of the project, regulatory approvals and planning premissions.

# CONNECT

The Wings,  
Opposite Miracle Garden,  
Arjan, Dubai

T: +971 4 553 3128  
M: +971 52 345 5055

E: [connect@thewings.ae](mailto:connect@thewings.ae)  
W: [thewings.ae](http://thewings.ae)

Project RERA number: 1948  
Plot number: 278

## Escrow Account Details

Escrow account number :  
019500000170  
Escrow bank details:  
Mashreq Bank PSC,  
Internet city branch, Dubai



Exclusively Marketed by  
Premier Estates

P03 Building 2, Bay Square,  
Business Bay, Dubai - UAE  
ORN: 11814



[almizan.com](http://almizan.com)